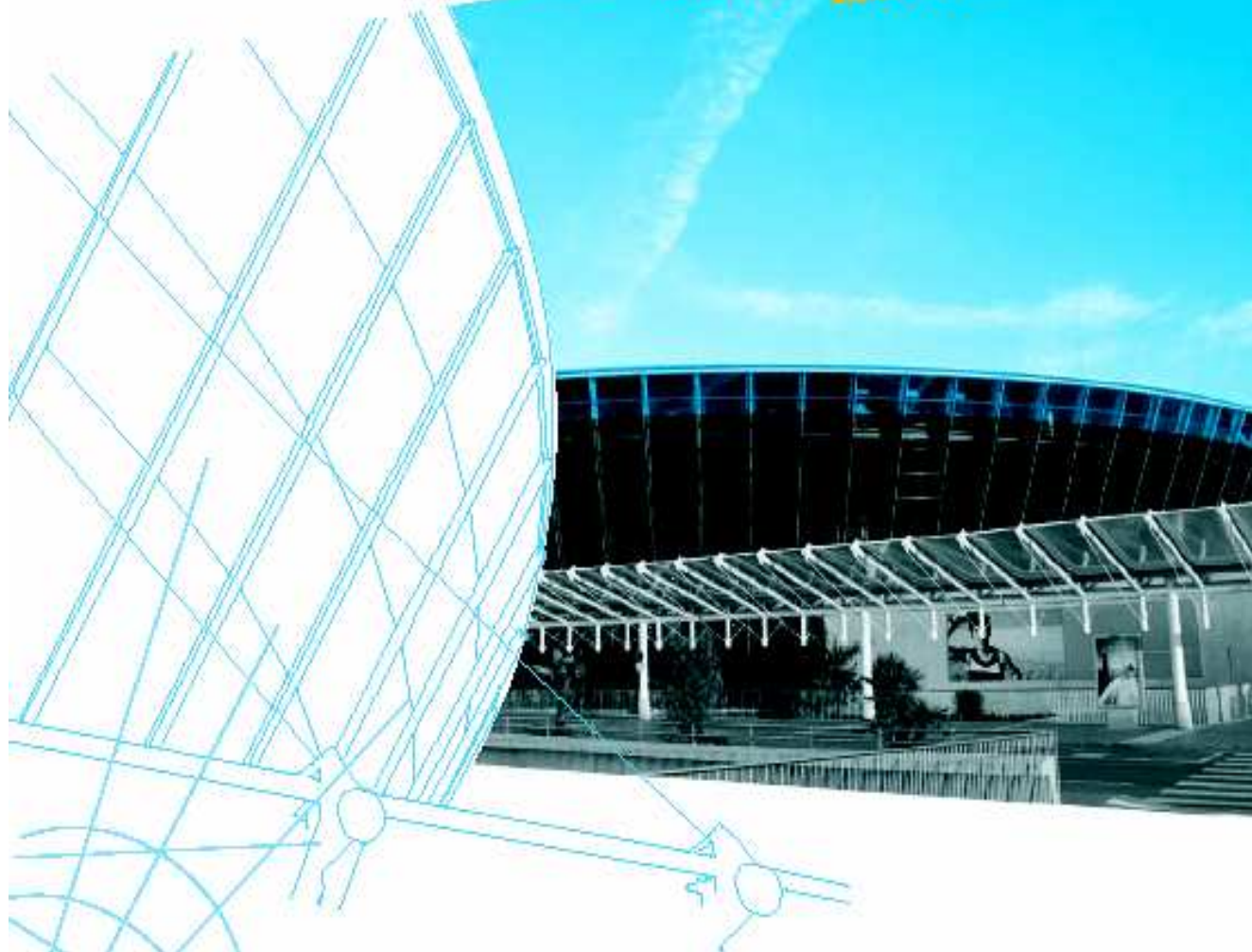




WARSAW - TUNIS - MOSCOW

NEW YORK - LONDON - DUBAI - STOCKHOLM

ATHENS - PARIS - LISBON



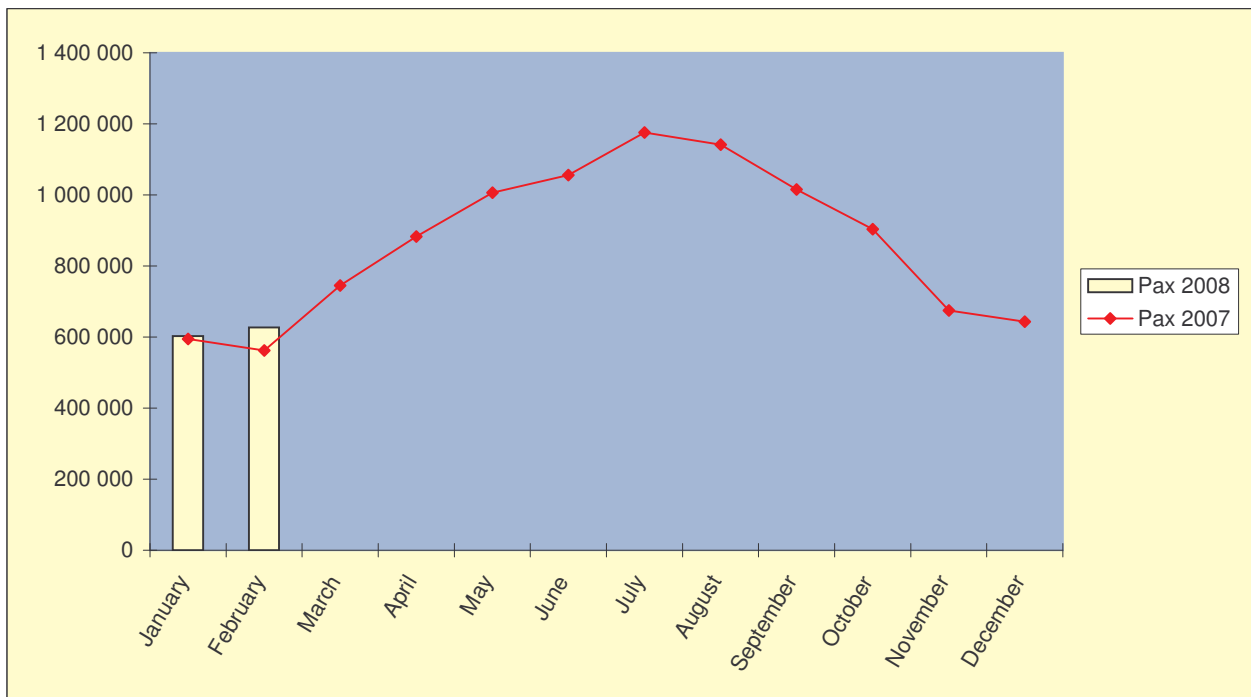
NICE CÔTE D'AZUR AIRPORT

THE SECOND AIRPORT IN FRANCE AND THE ONE THAT PUTS YOU FIRST

FEBRUARY 2008 STATISTICS REPORT

NICE CÔTE D'AZUR AIRPORT

MONTHLY REPORT



	Pax 2008	Pax 2007	Variation
January	602 633	594 594	1,4%
February	627 468	561 918	11,7%
March		744 939	
April		882 460	
May		1 006 003	
June		1 055 663	
July		1 175 498	
August		1 141 096	
September		1 014 889	
October		903 757	
November		675 043	
December		643 653	

FEBRUARY 2008

CONTENTS

Page	
1	SEASONALITY
2	CONTENTS
3	DEFINITIONS
	TRAFFIC ANALYSIS
5	General and Regional Trends
6	Nice Route Trends
	TOTAL TRAFFIC
8	Passenger Traffic
9	Aircraft Movements
10	Freight & Mail Traffic
	TRAFFIC DISTRIBUTION BETWEEN TERMINALS
12	Passenger Traffic by Terminal
	TRAFFIC BY REGION
14	General
15	European Union & Schengen Traffic
	TRAFFIC BY COUNTRY AND BY CITY PAIR
17	France
18	Europe
21	North Africa, Africa & Middle East
22	America (North, Center and South), Asia
	AIRLINE RESULTS
24	Scheduled Companies
26	Non Scheduled Companies
	FREIGHT REPORT
30	Freight by companies

NICE CÔTE D'AZUR AIRPORT / Marketing
Contact : Dominique Briatte
e mail: dominique.briatte@cote-azur.cci.fr
Phone : +33 (0)4 93 21 43 77
Fax: +33 (0)4 93 21 44 03

DEFINITIONS

PASSENGERS/PASSAGERS

PAX Désigne un passager.
Passenger.

ARR-DEP/LOCAUX : Désigne les passagers commerciaux locaux arrivée/départ. Ce sont les passagers commençant ou terminant leur voyage à l'aéroport considéré.
Local commercial passengers arrival/departure. These passengers begin or end their trip at the airport in question.

TRANSIT 1 FOIS (également appelé TRANSIT A L'ARRIVEE) : Désigne les passagers, quelles que soient les conditions de transport, effectuant un arrêt momentané sur l'aéroport et repartant par un appareil dont le numéro de vol au départ est identique au numéro de vol qu'ils ont emprunté à l'arrivée. Ces passagers ne sont comptabilisés qu'une seule fois à l'arrivée.
Denotes passengers transiting an airport on board an aircraft with one flight number. Their arrival and departure is only counted once.

TOTAL : Désigne les passagers commerciaux locaux + les passagers en transit à l'arrivée.
Local commercial passengers (including "transit 1 fois" passengers).

MOVEMENTS/MOUVEMENTS

COMMERCIAL MOVEMENTS/AVIONS COMMERCIAUX : Désigne les mouvements d'avions concernant les services aériens réguliers et non réguliers, internationaux et intérieurs, de transport public de passagers, de poste et/ou de fret.
Aircraft movements including both scheduled and non scheduled domestic and international air services carrying passengers, freight and mail. Commercial helicopter services are not included.

PRIVATE MOVEMENTS/MOUVEMENTS PRIVES : Désigne les mouvements d'avions utilisés à des fins diverses (épandage aérien, photographie aérienne, formation de pilotes, vols d'essai, d'affaires, militaires, aéro clubs, ...).
Non scheduled, ad hoc movements (including test flights, military flights, flight training, corporate flights, etc....).

HELICOPTERS/HELICOPTERES : Désigne tous les mouvements commerciaux assurés par des hélicoptères.
Helicopter movements.

TOTAL MOVEMENTS/TOTAL : Désigne la totalité des mouvements enregistrés sur la plate-forme.
Total aircraft (fixed wing and rotary) movements

FREIGHT/FRET

Le trafic FRET exprimé en kilos comprend les marchandises (payant et service), les journaux, les valises diplomatiques, à l'exception des bagages et de la poste.
Freight traffic (given in kgs) including all goods, newspapers, diplomatic mail. It does not include passenger baggage or post office mail.

MAIL/POSTE

Le trafic POSTE exprimé en kilos comprend uniquement les sacs fermés, remis par l'administration des postes, quel que soit leur contenu, et les colis postaux avion.
Mail traffic (given in kgs) includes only closed bags of post office mail and air mail parcels.

AREAS/DEFINITION DES REGIONS

FRANCE

Métropole et Corse (départements et territoires d'Outre Mer non compris).
Metropolitan France and the island of Corsica. Does not include French overseas territories ("DOM TOM").

EUROPE

Tous les pays de l'Europe géographique y compris la C.E.I à l'exception de la France.
All the countries of geographic Europe (including C.I.S countries) except France.

NORTH AFRICA/AFRIQUE DU NORD (MAGHREB)

Comprend le Maroc, L'Algérie et la Tunisie.
Morocco, Algeria and Tunisia.

AFRICA/AFRIQUE (Hors Maghreb)

Comprend tous les pays d'Afrique à l'exception du Maroc, de l'Algérie, de la Tunisie et de l'Egypte.
All African countries with the exception of Morocco, Algeria, Tunisia and Egypt.

NORTH AMERICA/AMERIQUE DU NORD

Comprend le Canada et les Etats-Unis d'Amérique.
Canada and United States of America.

MIDDLE EAST/ORIENT

Comprend tous les pays du proche, moyen et Extrême Orient. L'Egypte est également rattachée à cette région.
All countries of the Near and Middle East, including Egypt.

LEXIQUE

Grand total :
Non scheduled :

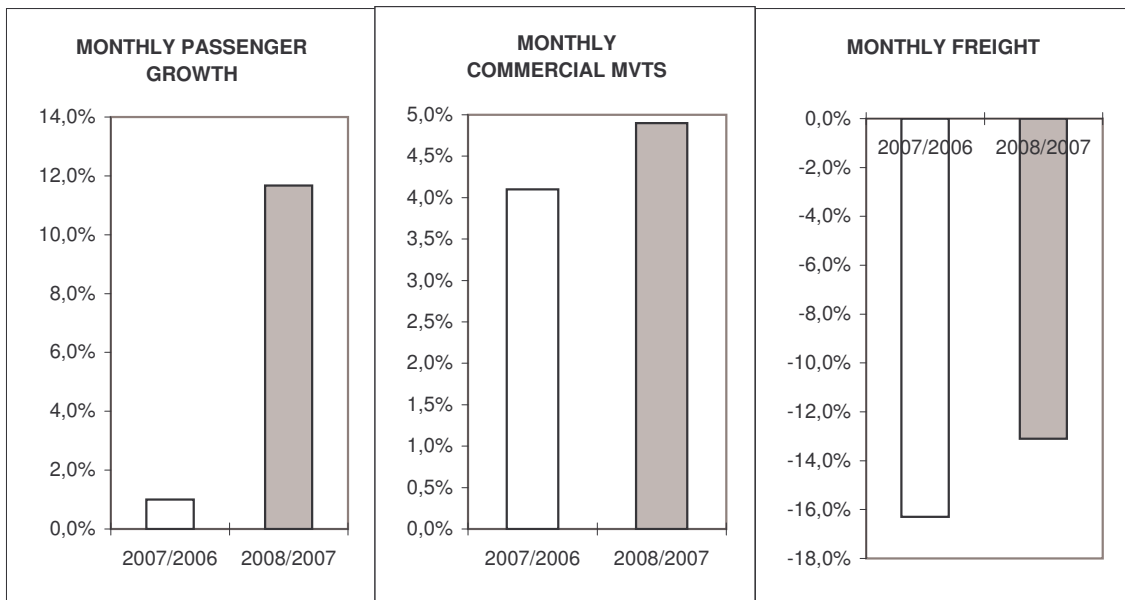
Total général
Vols non réguliers

Monthly :
Scheduled :

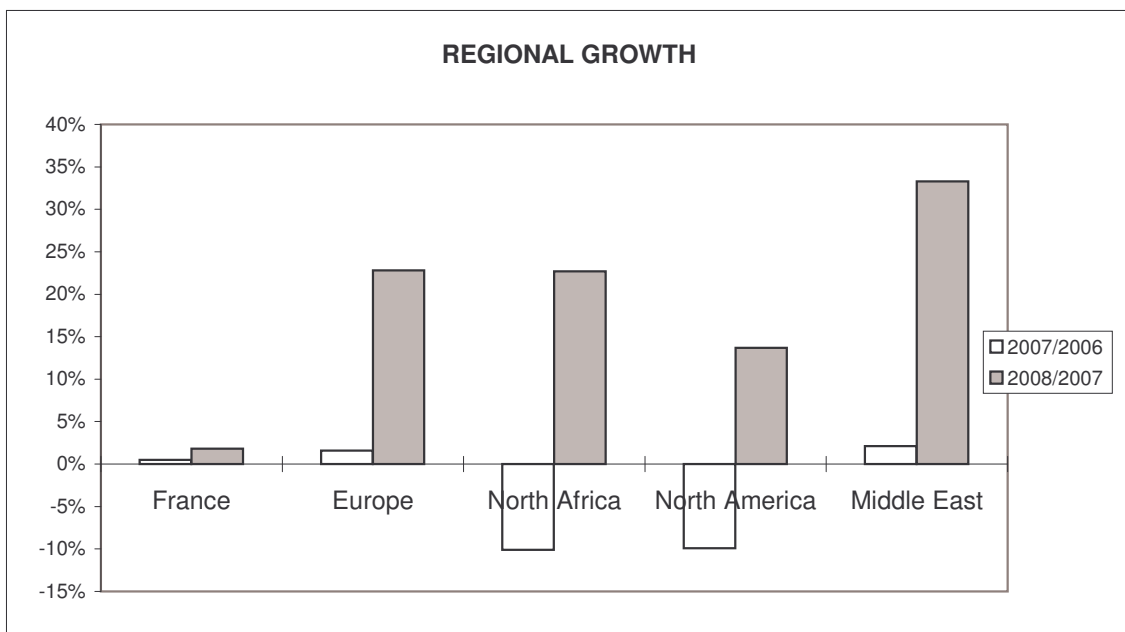
Mensuel
Vols réguliers

MONTHLY ANALYSIS : FEBRUARY 2008

1. GENERAL TRENDS.

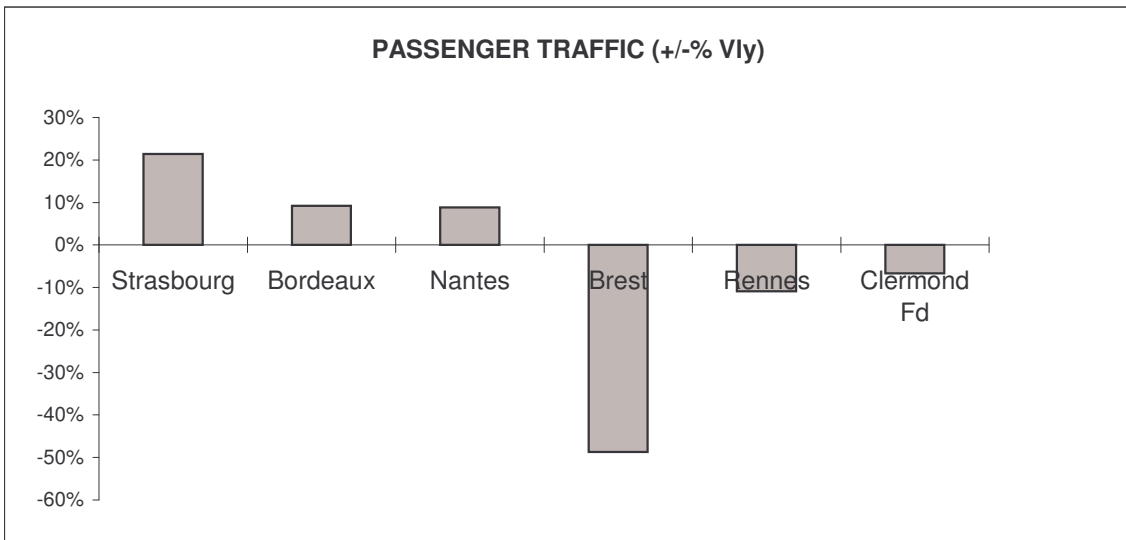
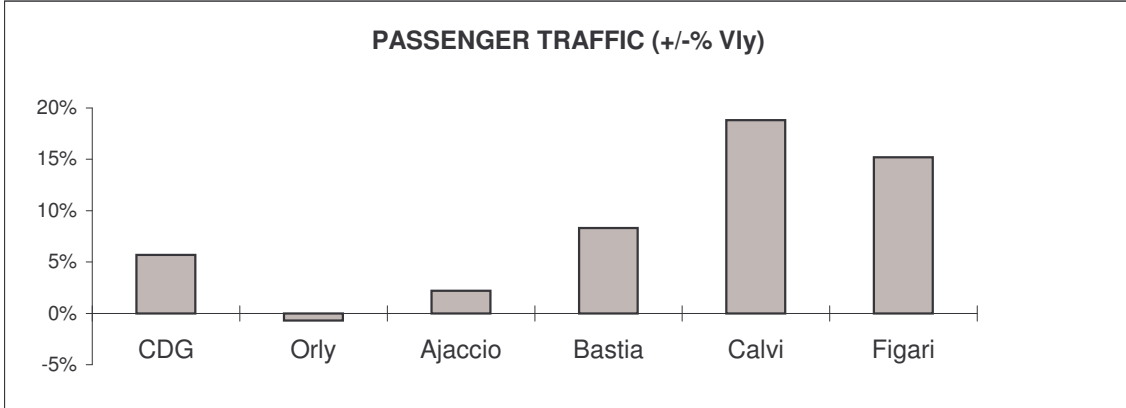


2. REGIONAL TRENDS.

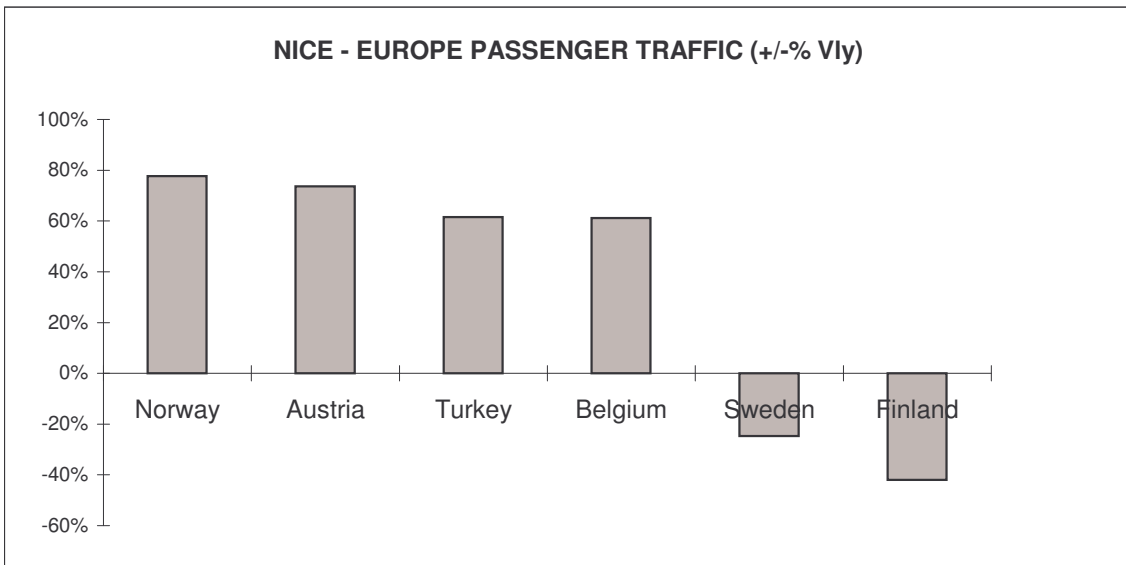


3. NICE ROUTE TRENDS.

A. FRANCE



B. EUROPE



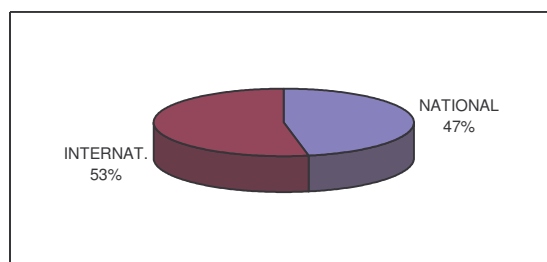
TOTAL TRAFFIC

PASSENGER TRAFFIC

MONTHLY	NATIONAL	Var 08/07	INTERNAT.	Var 08/07	TOTAL	Var 08/07
ARR	152 293	3,6%	169 981	28,1%	322 274	15,2%
DEP	141 988	0,0%	162 559	17,9%	304 547	8,8%
TOTAL PAX	294 281	1,8%	332 540	22,9%	626 821	12,0%

MONTHLY	NATIONAL	Var 08/07	INTERNAT.	Var 08/07	TOTAL	Var 08/07
TRANSIT PAX(ARR)	111	-91,4%	536	-46,9%	647	-71,9%

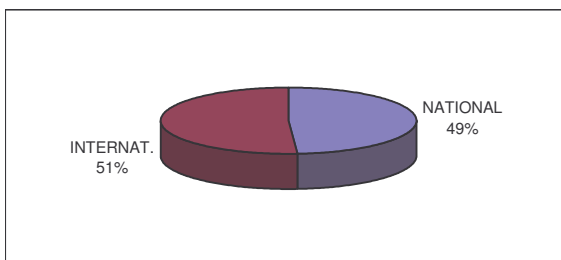
MONTHLY	TOTAL	Var 08/07
TOTAL PAX	627 468	11,7%



CUMUL	NATIONAL	Var 08/07	INTERNAT.	Var 08/07	TOTAL	Var 08/07
ARR	304 083	0,9%	316 033	14,9%	620 116	7,6%
DEP	296 149	-0,9%	312 375	12,5%	608 524	5,6%
PASSENGERS	600 232	0,0%	628 408	13,7%	1 228 640	6,6%

CUMUL	NATIONAL	Var 08/07	INTERNAT.	Var 08/07	TOTAL	Var 08/07
TRANSIT PAX(ARR)	410	-80,4%	1 051	-39,0%	1 461	-61,7%

CUMUL	TOTAL	Var 08/07
TOTAL PAX	1 230 101	6,4%



AIRCRAFT MOVEMENTS

MONTHLY	NATIONAL	Var 08/07	INTERNAT.	Var 08/07	TOTAL	Var 08/07
ARR	1 668	-2,1%	2 465	10,9%	4 133	5,2%
DEP	1 677	-1,5%	2 442	9,1%	4 119	4,5%
TOTAL COM./MVTS	3 345	-1,8%	4 907	10,0%	8 252	4,9%

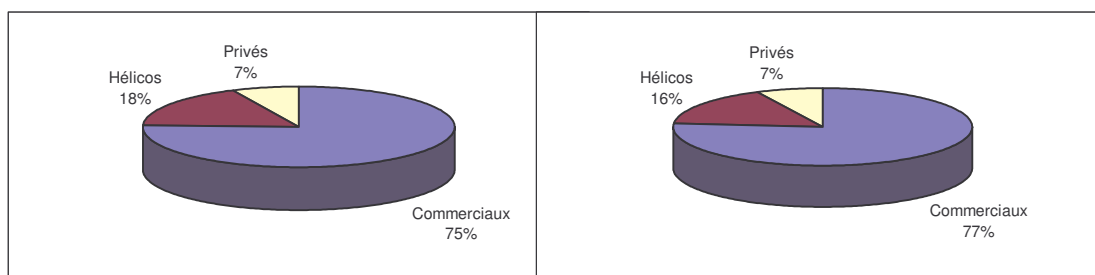
CUMUL	NATIONAL	Var 08/07	INTERNAT.	Var 08/07	TOTAL	Var 08/07
ARR	3 516	-1,7%	4 897	6,5%	8 413	2,9%
DEP	3 538	-1,1%	4 866	5,9%	8 404	2,8%
TOTAL COM./MVTS	7 054	-1,4%	9 763	6,2%	16 817	2,9%

MONTHLY	NATIONAL	Var 08/07	INTERNAT.	Var 08/07	TOTAL	Var 08/07
ARR	129	10,3%	251	13,1%	380	12,1%
DEP	133	1,5%	238	16,1%	371	10,4%
TOTAL PRIV./MVTS	262	5,6%	489	14,5%	751	11,3%

CUMUL	NATIONAL	Var 08/07	INTERNAT.	Var 08/07	TOTAL	Var 08/07
ARR	262	10,5%	532	21,7%	794	17,8%
DEP	267	10,3%	518	18,8%	785	15,8%
TOTAL PRIV./MVTS	529	10,4%	1 050	20,3%	1 579	16,8%

MONTHLY	NATIONAL	Var 08/07	INTERNAT.	Var 08/07	TOTAL	Var 08/07
ARR	1 797	-1,3%	2 716	11,1%	4 513	5,8%
DEP	1 810	-1,3%	2 680	9,7%	4 490	5,0%
TOTAL A/C.MVTS.	3 607	-1,3%	5 396	10,4%	9 003	5,4%

CUMUL	NATIONAL	Var 08/07	INTERNAT.	Var 08/07	TOTAL	Var 08/07
ARR	3 778	-1,0%	5 429	7,9%	9 207	4,1%
DEP	3 805	-0,4%	5 384	7,0%	9 189	3,8%
TOTAL A/C.MVTS.	7 583	-0,7%	10 813	7,5%	18 396	3,9%



MONTHLY	NATIONAL	-0,014689	INTERNAT.	-0,014689	TOTAL	-0,014689
ARR	960	-8,7%	0	NC	960	-8,8%
DEP	962	-8,5%	0	NC	962	-8,6%
TOTAL HELI./MVTS	1 922	-8,6%	0	NC	1 922	-8,7%

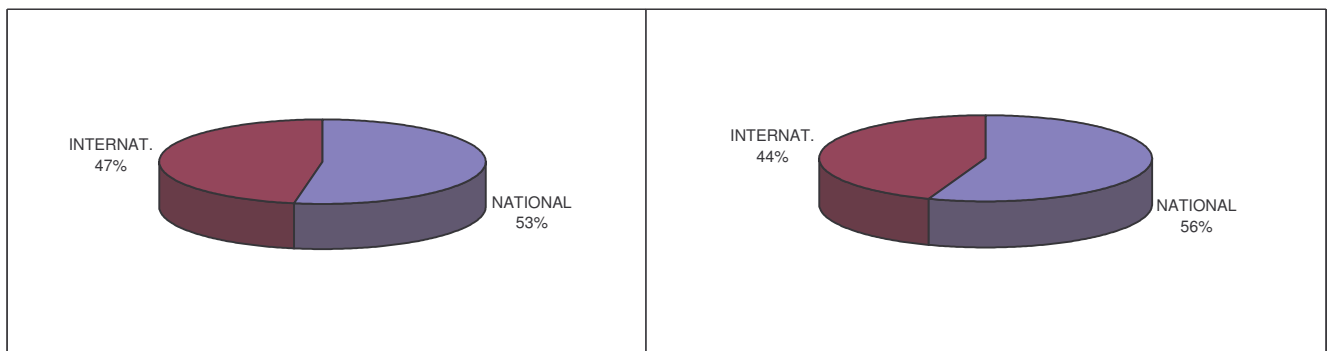
CUMUL	NATIONAL	-0,014689	INTERNAT.	-0,014689	TOTAL	-0,014689
ARR	1 798	-11,4%	0	NC	1 798	-11,5%
DEP	1 795	-11,4%	1	NC	1 796	-11,6%
TOTAL HELI./MVTS	3 593	-11,4%	1	NC	3 594	-11,5%

FREIGHT & MAIL TRAFFIC

COMMERCIAL + PRIVATE MOVEMENTS

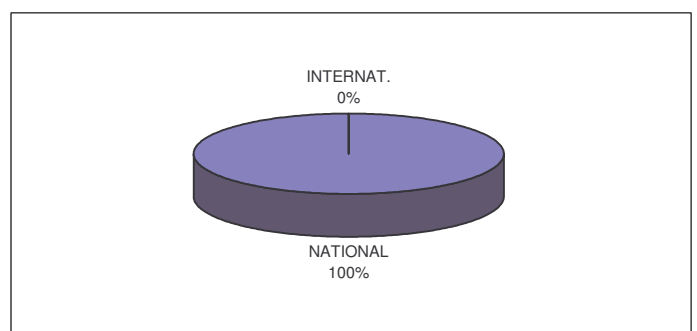
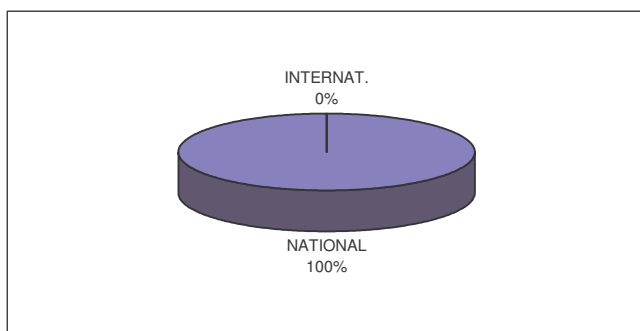
MONTHLY	NATIONAL	Var 00/99	INTERNAT.	Var 00/99	TOTAL	Var 00/99
ARR	177 201	-17,9%	75 789	-24,3%	252 990	-19,9%
DEP	122 168	-13,8%	191 139	-1,5%	313 307	-6,7%
COM./FREIGHT	299 369	-16,3%	266 928	-9,3%	566 297	-13,1%

CUMUL	NATIONAL	Var 00/99	INTERNAT.	Var 00/99	TOTAL	Var 00/99
ARR	365 831	-21,5%	160 475	-22,8%	526 306	-21,9%
DEP	242 611	-18,9%	324 197	-1,8%	566 808	-9,9%
COM./FREIGHT	608 442	-20,5%	484 672	-9,9%	1 093 114	-16,1%



MONTHLY	NATIONAL	Var 00/99	INTERNAT.	Var 00/99	TOTAL	Var 00/99
ARR	146 267	-16,0%	49	-85,4%	146 316	-16,2%
DEP	97 437	-5,2%	56	115,4%	97 493	-5,2%
COM./MAIL	243 704	-12,0%	105	-71,0%	243 809	-12,1%

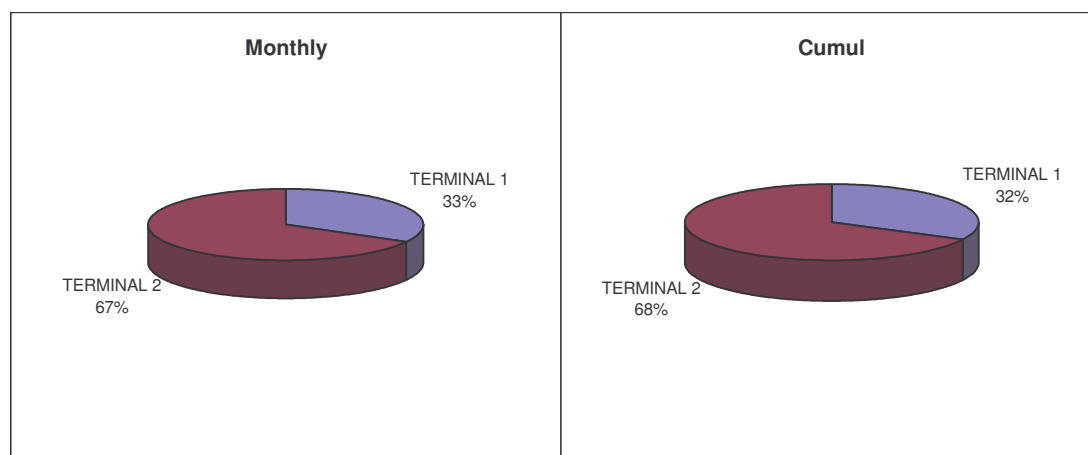
CUMUL	NATIONAL	Var 00/99	INTERNAT.	Var 00/99	TOTAL	Var 00/99
ARR	279 766	-21,4%	50	-94,6%	279 816	-21,6%
DEP	200 773	-6,4%	129	186,7%	200 902	-6,4%
COM./MAIL	480 539	-15,8%	179	-81,5%	480 718	-15,9%



TRAFFIC DISTRIBUTION BETWEEN TERMINALS ONE AND TWO

PASSENGER TRAFFIC BY TERMINAL

MONTHLY		ARR	DEP	TRA	TOTAL	VAR 08/07
TERMINAL 1		106 135	101 055	647	207 837	13,5%
↳	NATIONAL	3 433	3 377	111	6 921	-15,7%
↳	INTERNATIONAL	102 702	97 678	536	200 916	14,8%
↳	↳ EUROPEAN UNION	85 202	81 158	2	166 362	12,3%
↳	↳ SCHENGEN	60 489	57 213	24	117 726	4,5%
TERMINAL 2		216 139	203 492	0	419 631	10,8%
↳	NATIONAL	148 860	138 611	0	287 471	1,9%
↳	INTERNATIONAL	67 279	64 881	0	132 160	36,7%
↳	↳ EUROPEAN UNION	41 870	40 060	0	81 930	39,3%
↳	↳ SCHENGEN	17 392	16 388	0	33 780	148,9%
CUMUL		ARR	DEP	TRA	TOTAL	VAR 08/07
TERMINAL 1		198 335	198 542	1 461	398 338	6,6%
↳	NATIONAL	9 487	9 434	410	19 331	14,0%
↳	INTERNATIONAL	188 848	189 108	1 051	379 007	6,3%
↳	↳ EUROPEAN UNION	156 796	157 711	2	314 509	4,2%
↳	↳ SCHENGEN	112 760	110 830	24	223 614	-2,2%
TERMINAL 2		421 781	409 982	0	831 763	6,2%
↳	NATIONAL	294 596	286 715	0	581 311	-0,7%
↳	INTERNATIONAL	127 185	123 267	0	250 452	26,7%
↳	↳ EUROPEAN UNION	75 841	76 666	0	152 507	31,5%
↳	↳ SCHENGEN	32 363	31 869	0	64 232	138,8%



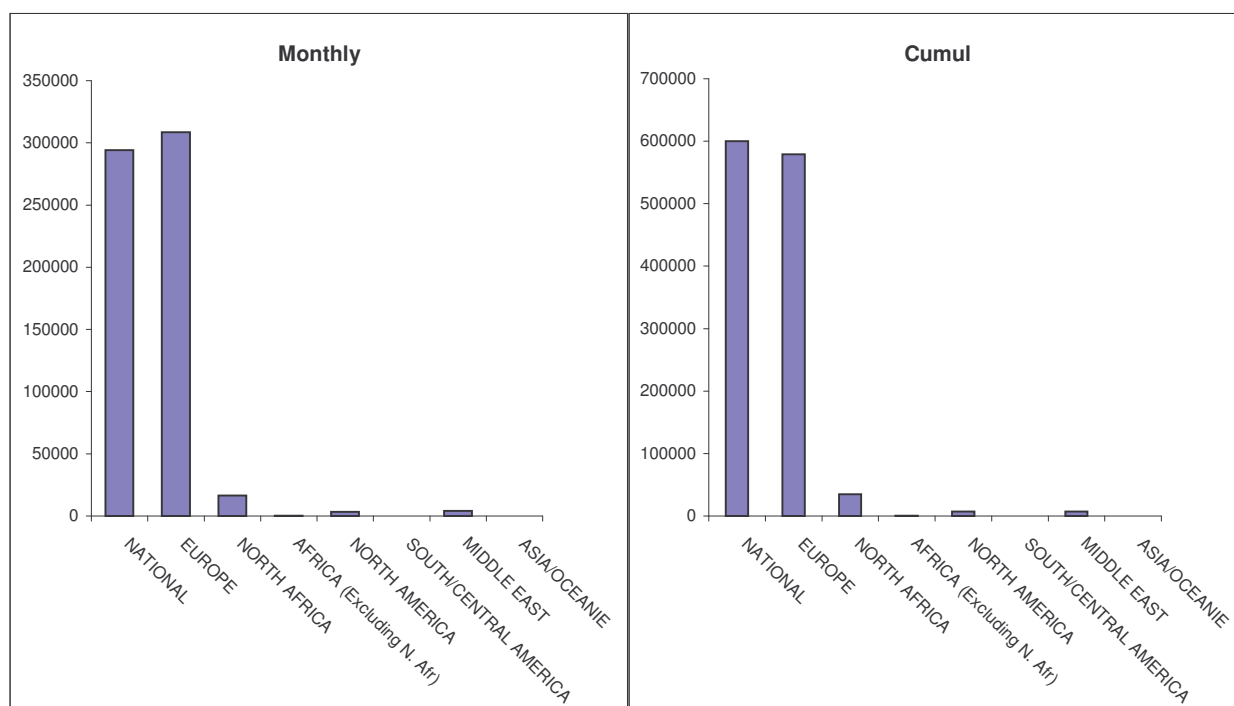
European Countries : Austria, Belgium, Bulgaria, Cyprus, Czech Republic, Danemark, Deutschland, Estonia, Finland, France, Greece, Hungary, Ireland, Italy, Latvia, Lithuania, Luxembourg, Malta, Netherlands, Poland, Portugal, Roumania, Slovakia, Slovenia, Spain, Sweden, United Kingdom

Schengen Area : Austria, Belgium, Czech Republic, Danemark, Deutschland, Estonia, Finland, France, Greece, Hungary, Iceland, Italy, Latvia, Lithuania, Luxembourg, Malta, Netherlands, Norway, Poland, Portugal, Slovakia, Slovenia, Spain, Sweden.

PASSENGER TRAFFIC BY REGION

GENERAL TRAFIC BY REGION

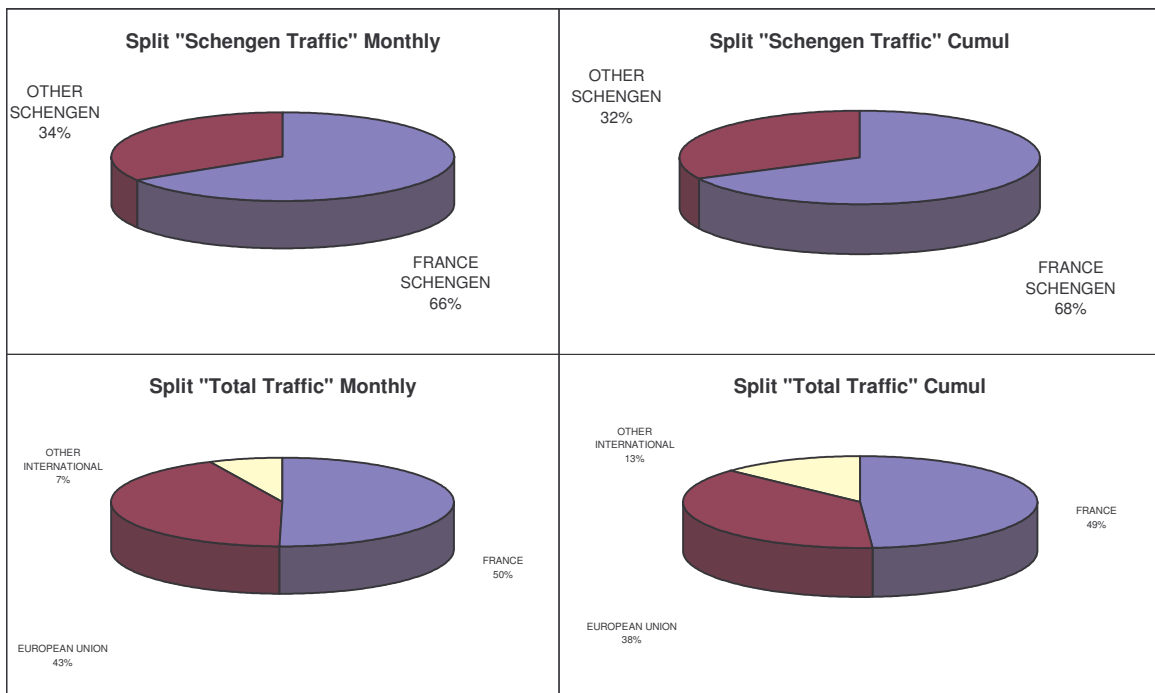
REGION	ARR	DEP	TOTAL	1900/1899	CUMUL	1900/1899
NATIONAL	152 293	141 988	294 281	1,8%	600 232	0,0%
EUROPE	157 571	150 928	308 499	22,8%	578 917	13,9%
NORTH AFRICA	8 426	8 039	16 465	22,7%	34 957	10,9%
AFRICA (Excluding N. Afr)	250	0	250	380,8%	258	303,1%
NORTH AMERICA	1 544	1 679	3 223	13,7%	7 301	17,9%
SOUTH/CENTRAL AMERICA	0	0	0	0,0%	0	0,0%
MIDDLE EAST	2 190	1 913	4 103	33,3%	6 970	5,4%
ASIA/OCEANIE	0	0	0	0,0%	5	0,0%
TRANSIT	647		647	-71,9%	1461	-61,7%
TOTAL	322 921	304 547	627 468	11,7%	1 230 101	6,4%



UE & SCHENGEN TRAFFIC

	ARR	DEP	TOTAL	2008/2007	CUMUL	2008/2007
SCHENGEN	230 174	215 589	445 763	7,4%	888 054	3,8%
→ FRANCE SCHENGEN	152 293	141 988	294 281	1,8%	600 232	0,0%
→ OTHER SCHENGEN	77 881	73 601	151 482	20,2%	287 822	12,8%

	ARR	DEP	TOTAL	2008/2007	CUMUL	2008/2007
FRANCE	152 293	141 988	294 281	1,8%	600 232	0,0%
EUROPEAN UNION	127 072	121 218	248 290	20,1%	467 014	11,9%
OTHER INTERNATIONAL	42 909	41 341	84 250	32,0%	161 394	19,4%
TOTAL TRAFIC	322 274	304 547	626 821	12,0%	1 228 640	6,6%



European Countries : Austria, Belgium, Bulgaria, Cyprus, Czech Republic, Denmark, Deutschland, Estonia, Finland, France, Greece, Hungary, Ireland, Italy, Latvia, Lithuania, Luxembourg, Malta, Netherlands, Poland, Portugal, Roumania, Slovakia, Slovenia, Spain, Sweden, United Kingdom

Schengen Area : Austria, Belgium, Czech Republic, Denmark, Deutschland, Estonia, Finland, France, Greece, Hungary, Iceland, Italy, Latvia, Lithuania, Luxembourg, Malta, Netherlands, Norway, Poland, Portugal, Slovakia, Slovenia, Spain, Sweden.

TRAFFIC
BY
COUNTRY
AND BY CITY PAIR

REGIONS	DESTINATIONS	ARR	DEP	TOTAL	Var 08/07	CUMUL	Var 08/07
FRANCE							
FRANCE	PARIS CDG	32 420	30 077	62 497	5,7%	124 264	0,2%
	Non scheduled:	46	0	46		1 100	
	PARIS ORLY	81 817	74 914	156 731	-0,7%	322 842	-2,0%
	Non scheduled:	0	0	0		1 250	
	S/TOTAL PARIS	114 283	104 991	219 274	1,0%	449 456	-1,2%
	AJACCIO	3 835	3 776	7 611	2,2%	14 664	-2,5%
	Non scheduled:	2	0	2		3	
	BASTIA	3 873	4 049	7 922	8,3%	15 611	5,9%
	Non scheduled:	0	0	0		0	
	CALVI	600	634	1 234	18,8%	2 386	6,1%
	Non scheduled:	0	0	0		0	
	FIGARI	830	965	1 795	15,2%	3 484	12,1%
	Non scheduled:	0	4	4		9	
	S/TOTAL CORSICA	9 140	9 428	18 568	6,8%	36 157	2,0%
	BIARRITZ	261	240	501	100,0%	989	100,0%
	Non scheduled:	0	0	0		0	
	BORDEAUX	2 896	2 569	5 465	9,2%	10 684	3,6%
	Non scheduled:	42	40	82		604	
	BREST	326	307	633	-48,7%	1 176	-55,8%
	Non scheduled:	0	0	0		255	
	CLERMONT FD	737	789	1 526	-6,7%	2 986	-6,2%
	Non scheduled:	0	0	0		0	
	FAYENCE	0	3	3	100,0%	3	100,0%
	Non scheduled:	0	0	0		5	
	LILLE	4 013	3 880	7 893	6,9%	14 749	-0,6%
	Non scheduled:	129	109	238		1 199	
	LIMOGES	0	0	0	100,0%	77	16,7%
	Non scheduled:	0	0	0		196	
	LYON ST EXUPERY	6 495	6 166	12 661	7,4%	25 386	2,5%
	Non scheduled:	0	2	2		103	
	METZ/NANCY	669	674	1 343	6,7%	2 675	11,6%
	Non scheduled:	0	0	0		595	
	MONACO	2 721	2 501	5 222	-17,2%	9 461	-19,2%
	Non scheduled:	78	66	144		144	
	NANTES	3 639	3 294	6 933	8,8%	13 632	8,8%
	Non scheduled:	1	28	29		429	
	PALM BEACH	0	0	0	100,0%	0	-100,0%
	Non scheduled:	0	0	0		0	
	PORT-GRIMAUD	31	45	76	100,0%	163	100,0%
	Non scheduled:	4	9	13		29	
	RENNES	1 070	1 183	2 253	-10,9%	4 345	-11,5%
	Non scheduled:	0	0	0		734	
	SAINT TROPEZ	0	0	0	100,0%	0	-100,0%
	Non scheduled:	18	16	34		39	
	STRASBOURG	2 675	2 643	5 318	21,4%	10 490	15,4%
	Non scheduled:	0	0	0		433	
	TOULOUSE	2 894	2 829	5 723	1,6%	11 613	1,8%
	Non scheduled:	0	0	0		370	
	OTHERS	171	176	347		1 055	
	S/TOTAL OTHER FRANCE	28 699	27 393	56 092	3,7%	113 564	4,1%
	TOTAL FRANCE	152 293	141 988	294 281	1,8%	600 232	0,0%

REGIONS	DESTINATIONS	ARR	DEP	TOTAL	Var 08/07	CUMUL	Var 08/07
EUROPE							
ALLEMAGNE							
	BERLIN SCHONEFE	2 569	2 533	5 102	5,7%	9 401	-4,5%
	Non scheduled:	0	0	0		0	
	COLOGNE	1 488	1 297	2 785	-9,1%	5 040	-15,6%
	Non scheduled:	3	0	3		4	
	DUSSELDORF	2 583	2 834	5 417	48,5%	11 121	50,2%
	Non scheduled:	2	0	2		4	
	FRANCFORT	8 932	8 687	17 619	31,6%	34 090	21,5%
	Non scheduled:	0	0	0		4	
	HAMBOURG	265	299	564	-68,7%	1 413	-62,8%
	Non scheduled:	2	3	5		6	
	MUNICH	7 475	6 887	14 362	27,0%	26 833	19,6%
	Non scheduled:	17	3	20		25	
	STUTTGART	0	0	0	-100,0%	0	-100,0%
	Non scheduled:	18	20	38		79	
	OTHERS	12	18	30		59	
	TOTAL ALLEMAGNE	23 366	22 581	45 947	14,8%	88 079	9,0%
AUTRICHE							
	VIENNE	2 916	2 678	5 594	73,3%	10 835	60,1%
	Non scheduled:	6	17	23		24	
	OTHERS	9	3	12		30	
	TOTAL AUTRICHE	2 931	2 698	5 629	73,6%	10 889	59,4%
BELGIQUE							
	BRUXELLES	10 956	10 656	21 612	61,5%	41 236	52,3%
	Non scheduled:	2	2	4		11	
	OTHERS	4	2	6		22	
	TOTAL BELGIQUE	10 962	10 660	21 622	61,2%	41 269	52,1%
DANEMARK							
	COPENHAGUE	6 558	6 097	12 655	12,1%	21 549	-3,0%
	Non scheduled:	0	0	0		1	
	OTHERS	8	3	11		15	
	TOTAL DANEMARK	6 566	6 100	12 666	10,5%	21 565	-5,3%
ESPAGNE							
	BARCELONE	2 546	2 435	4 981	76,8%	8 776	63,1%
	Non scheduled:	97	7	104		118	
	MADRID	3 838	3 667	7 505	29,2%	15 497	26,2%
	Non scheduled:	25	23	48		48	
	VALENCE	0	0	0	100,0%	11	100,0%
	Non scheduled:	8	10	18		19	
	OTHERS	18	24	42		78	
	TOTAL ESPAGNE	6 532	6 166	12 698	41,5%	24 547	32,6%
FINLANDE							
	HELSINKI	266	235	501	-39,0%	501	-66,9%
	Non scheduled:	0	0	0		4	
	OTHERS	0	0	0		5	
	TOTAL FINLANDE	266	235	501	-42,0%	510	-67,4%
GRANDE BRETAGNE							
	LONDRES LCY	736	734	1 470	100,0%	2 753	100,0%
	Non scheduled:	17	28	45		85	
	LONDRES LGW	9 142	9 557	18 699	7,6%	34 095	-2,8%
	Non scheduled:	0	3	3		12	
	LONDRES LHR	17 462	16 235	33 697	25,3%	63 960	18,6%
	Non scheduled:	0	18	18		29	
	LONDRES LTN	8 465	7 974	16 439	4,7%	30 053	-2,0%
	Non scheduled:	79	73	152		205	

	LONDRES STN	2 467	2 421	4 888	2,3%	8 645	-5,8%
	Non scheduled:	137	138	275		295	
	S/TOTAL LONDON	38 505	37 181	75 686	16,6%	140 132	8,0%
	BIRMINGHAM	1 261	1 198	2 459	42,9%	4 341	18,5%
	Non scheduled:	0	0	0		0	
	BRISTOL	1 784	1 704	3 488	-14,1%	6 442	-12,7%
	Non scheduled:	0	2	2		5	
	CARDIFF	0	0	0	100,0%	0	-100,0%
	Non scheduled:	0	0	0		0	
	EDIMBOURG	0	0	0	100,0%	206	100,0%
	Non scheduled:	5	0	5		24	
	LIVERPOOL	3 913	3 728	7 641	5,4%	12 902	-8,1%
	Non scheduled:	1	0	1		1	
	OTHERS	72	48	120		253	
	S/TOTAL OTHER GRANDE BRETAGNE	6 964	6 632	13 596	4,3%	23 921	-8,3%
	TOTAL GRANDE BRETAGNE	45 541	43 861	89 402	14,6%	164 306	4,9%
IRLANDE							
	DUBLIN	6 359	6 172	12 531	100,0%	23 478	100,0%
	Non scheduled:	11	7	18		37	
	OTHERS	0	0	0		0	
	TOTAL IRLANDE	6 370	6 179	12 549	100,0%	23 515	100,0%
ITALIE							
	CATANE	20	90	110	100,0%	110	100,0%
	Non scheduled:	0	0	0		0	
	MILAN MALPENSA	1 681	1 628	3 309	8,8%	6 414	-0,1%
	Non scheduled:	0	0	0		73	
	NAPLES	0	0	0	-100,0%	0	-100,0%
	Non scheduled:	2	1	3		3	
	ROME FCO	5 836	5 674	11 510	13,9%	23 493	10,0%
	Non scheduled:	304	302	606		606	
	OTHERS	191	179	370		492	
	TOTAL ITALIE	8 034	7 874	15 908	12,0%	31 191	3,3%
LUXEMBOURG							
	LUXEMBOURG	993	983	1 976	24,8%	3 897	26,3%
	Non scheduled:	0	0	0		40	
	OTHERS	0	0	0		0	
	TOTAL LUXEMBOURG	993	983	1 976	24,5%	3 937	27,4%
NORVEGE							
	KRISTIANSAND	0	0	0	-100,0%	0	-100,0%
	OSLO GEN	2 724	2 432	5 156	83,8%	8 685	68,2%
	Non scheduled:	0	0	0		0	
	OTHERS	0	0	0		0	
	TOTAL NORVEGE	2 724	2 432	5 156	77,7%	8 685	65,0%
PAYS BAS							
	AMSTERDAM	7 830	6 863	14 693	12,8%	28 439	7,1%
	Non scheduled:	7	8	15		17	
	ROTTERDAM	1 868	1 680	3 548	-13,0%	6 987	-20,8%
	Non scheduled:	83	79	162		162	
	OTHERS	0	0	0		12	
	TOTAL PAYS BAS	9 788	8 630	18 418	5,9%	35 617	-0,5%
POLOGNE							
	KATOWICE	0	0	0	100,0%	21	100,0%
	Non scheduled:	0	0	0		0	
	VARSOVIE	713	714	1 427	-4,4%	2 903	-11,3%
	Non scheduled:	144	170	314		314	
	OTHERS	499	562	1 061		1 937	
	TOTAL POLOGNE	1 356	1 446	2 802	11,5%	5 175	6,7%

PORTUGAL	LISBONNE	1 590	1 482	3 072	51,7%	6 243	39,6%
	Non scheduled:	0	0	0		6	
	PORTO	122	37	159	11,2%	396	-13,7%
	OTHERS	0	0	0		0	
	TOTAL PORTUGAL	1 712	1 519	3 231	48,9%	6 645	34,2%
RUSSIE	MOSCOU	1 813	1 785	3 598	45,8%	7 248	28,9%
	Non scheduled:	37	49	86		134	
	OTHERS	19	16	35		82	
		TOTAL RUSSIE	1 869	1 850	3 719	47,1%	7 464
SUEDE	GOTEBORG	354	299	653	-68,4%	1 437	-63,7%
	MALMOE	0	0	0	-100,0%	0	-100,0%
	Non scheduled:	0	0	0		0	
	STOCKHOLM	2 232	1 941	4 173	10,3%	7 835	0,2%
	Non scheduled:	4	0	4		8	
	OTHERS	29	0	29		29	
	TOTAL SUEDE	2 619	2 240	4 859	-24,7%	9 309	-25,5%
SUISSE	BALE	6 051	5 898	11 949	54,8%	20 722	41,9%
	Non scheduled:	0	0	0		0	
	GENEVE	9 811	9 618	19 429	20,6%	36 193	11,4%
	Non scheduled:	54	47	101		214	
	ZURICH	9 078	8 886	17 964	27,8%	34 653	17,0%
	Non scheduled:	25	9	34		50	
	OTHERS	38	16	54		95	
	TOTAL SUISSE	25 057	24 474	49 531	30,3%	91 927	19,4%
TURQUIE	ISTANBUL	718	818	1 536	61,7%	3 526	30,4%
	Non scheduled:	0	0	0		0	
	OTHERS	1	0	1		1	
		TOTAL TURQUIE	719	818	1 537	61,6%	3 527
	OTHER COUNTRIES	166	182	348		760	
	TOTAL AERA	157 571	150 928	308 499	22,8%	578 917	13,9%

REGIONS	DESTINATIONS	ARR	DEP	TOTAL	Var 08/07	CUMUL	Var 08/07
AFRIQUE DU NORD							
ALGERIE							
	ALGER	436	468	904	18,3%	1 990	9,9%
	Non scheduled:	3	6	9		23	
	OTHERS	0	0	0		0	
	TOTAL ALGERIE	439	474	913	19,3%	2 013	11,1%
MAROC							
	CASABLANCA	1 332	1 462	2 794	14,4%	6 526	9,1%
	Non scheduled:	0	0	0		0	
	MARRAKECH	1 401	1 232	2 633	23,8%	4 825	2,7%
	Non scheduled:	4	0	4		28	
	OTHERS	0	4	4		4	
	TOTAL MAROC	2 737	2 698	5 435	18,9%	11 383	6,2%
TUNISIE							
	DJERBA	475	306	781	47,1%	1 862	36,5%
	Non scheduled:	313	331	644		884	
	MONASTIR	979	773	1 752	17,5%	3 598	10,4%
	Non scheduled:	213	195	408		951	
	TUNIS	3 270	3 262	6 532	15,4%	14 266	8,9%
	Non scheduled:	0	0	0		0	
	OTHERS	0	0	0		0	
	TOTAL TUNISIE	5 250	4 867	10 117	25,2%	21 561	13,5%
	OTHER COUNTRY	0	0	0		0	
	TOTAL AERA	8 426	8 039	16 465	22,7%	34 957	10,9%

REGIONS	DESTINATIONS	ARR	DEP	TOTAL	Var 08/07	CUMUL	Var 08/07
AFRIQUE (HORS AFRIQUE DU NORD)							
	OTHER COUNTRY	250	0	250		258	
	TOTAL AERA	250	0	250	100,0%	258	100,0%

REGIONS	DESTINATIONS	ARR	DEP	TOTAL	Var 08/07	CUMUL	Var 08/07
MOYEN ORIENT							
EMIRATS ARABES UNIS							
	DUBAI	2 176	1 911	4 087	33,7%	6 934	11,5%
	Non scheduled:	1	0	1		15	
	OTHERS	0	0	0		0	
	TOTAL EMIRATS A	2 177	1 911	4 088	33,5%	6 949	11,4%
	OTHER COUNTRY	13	2	15		21	
	TOTAL AERA	2 190	1 913	4 103	33,3%	6 970	5,4%

REGIONS	DESTINATIONS	ARR	DEP	TOTAL	Var 08/07	CUMUL	Var 08/07
AMERIQUE DU NORD							
ETATS UNIS							
	NEW YORK	1 544	1 676	3 220	14,3%	7 278	17,9%
	Non scheduled:	0	0	0		0	
	OTHERS	0	3	3		23	
	TOTAL ETATS UNIS	1 544	1 679	3 223	13,8%	7 301	18,0%
	OTHER COUNTRIES	0	0	0		0	
	TOTAL AERA	1 544	1 679	3 223	13,7%	7 301	17,9%

REGIONS	DESTINATIONS	ARR	DEP	TOTAL	Var 08/07	CUMUL	Var 08/07
AMERIQUE CENTRE SUD							
	OTHER COUNTRIES	0	0	0		0	
	TOTAL AERA	0	0	0	100,0%	0	100,0%

REGIONS	DESTINATIONS	ARR	DEP	TOTAL	Var 08/07	CUMUL	Var 08/07
ASIE/OCEANIE							
	OTHER COUNTRIES	0	0	0		5	
	TOTAL AERA	0	0	0	100,0%	5	100,0%

AIRLINE RESULTS

(1) SCHEDULED
(2) NON SCHEDULED

Dans les cas suivants, les trafics de plusieurs compagnies ont été regroupés :
Traffics of some carriers here under have been amalgamated :

AIR France = AIR France + BRIT AIR + REGIONAL AIRLINES + CITYJET
 IBERIA = IBERIA + AIR NOSTRUM
 BRITISH AIRWAYS = BRITISH AIRWAYS + BA CONNECT
 BRUSSELS AIRLINES = BRUSSELS AIRLINES + BRUSSELS AIRLINES FLY
 EASYJET = EASYJET + EASYJET SWITZERLAND
 KLM = KLM ROYAL DUTCH AIRLINES + KLM CITY HOPPER
 LUFTHANSA = LUFTHANSA + LUFTHANSA CITYLINE
 SAS = SAS + SAS NORWAY
 SKY EUROPE = SKY EUROPE + SKY EUROPE HUNGARY

SCHEDULED COMPANIES		ARR	DEP	TOTAL	Var 08/07	CUMUL	Var 08/07
AER LINGUS	Scheduled	2 673	2 506	5 179		9 424	
	Total	2 673	2 506	5 179	-8,0%	9 424	-12,8%
AEROFLOT	Scheduled	1 813	1 785	3 598		7 248	
	Total	1 813	1 785	3 598	45,8%	7 248	28,9%
AIR ALGERIE	Scheduled	436	468	904		1 990	
	Total	436	468	904	18,3%	1 990	9,9%
AIR BERLIN	Scheduled	3 451	3 541	6 992		14 147	
	Non Scheduled			0		0	
	Total	3 451	3 541	6 992	4,9%	14 147	8,9%
AIR FRANCE	Scheduled	112 670	103 263	215 933		435 628	
	Non Scheduled	0	0	0		0	
	Total	112 670	103 263	215 933	4,0%	435 628	0,1%
ALITALIA	Scheduled	6 340	6 251	12 591		24 964	
	Non Scheduled			0		0	
	Total	6 340	6 251	12 591	20,1%	24 964	12,2%
ATLAS BLUE	Scheduled	1 401	1 232	2 633		4 825	
	Non Scheduled			0		0	
	Total	1 401	1 232	2 633	23,8%	4 825	2,7%
AUSTRIAN AIRLINES	Scheduled	1 333	1 240	2 573		5 492	
	Non Scheduled			0		0	
	Total	1 333	1 240	2 573	-20,3%	5 492	-19,0%
BLUE 1, OY	Scheduled	266	235	501		501	
	Total	266	235	501	-39,0%	501	-66,9%
BLUE PANORAMA / BLU EXPRESS	Scheduled	1 197	1 141	2 338		5 053	
	Non Scheduled			0		5	
	Total	1 197	1 141	2 338	-12,1%	5 058	-8,8%
BMI BABY	Scheduled	1 261	1 198	2 459		4 341	
	Total	1 261	1 198	2 459	42,9%	4 341	18,5%
BRITISH AIRWAYS	Scheduled	19 491	18 681	38 172		70 467	
	Non Scheduled	0	0	0		0	
	Total	19 491	18 681	38 172	24,1%	70 467	14,7%
BRUSSELS AIRLINES	Scheduled	7 319	7 092	14 411		28 167	
	Non Scheduled	250	0	250		250	
	Total	7 569	7 092	14 661	9,5%	28 417	5,0%
CORSE MEDITERRANEE	Scheduled	12 032	12 253	24 285		47 758	
	Non Scheduled			0		0	
	Total	12 032	12 253	24 285	5,5%	47 758	2,6%
DELTA AIR LINES	Scheduled	1 544	1 676	3 220		7 278	
	Non Scheduled			0		0	
	Total	1 544	1 676	3 220	14,3%	7 278	17,9%
EASYJET	Scheduled	69 597	67 564	137 161		261 754	
	Non Scheduled			0		0	
	Total	69 597	67 564	137 161	12,7%	261 754	7,5%
EMIRATES	Scheduled	2 176	1 911	4 087		6 934	
	Total	2 176	1 911	4 087	33,7%	6 934	11,5%
FLYBABOO	Scheduled	1 703	1 659	3 362		6 387	
	Total	1 703	1 659	3 362	0,5%	6 387	-2,5%

SCHEDULED COMPANIES		ARR	DEP	TOTAL	Var 08/07	CUMUL	Var 08/07
GERMANWINGS	Scheduled	1 488	1 297	2 785		5 040	
	Non Scheduled			0		0	
	Total	1 488	1 297	2 785	-9,1%	5 040	-15,6%
GLOBESPAN AIRWAYS LTD	Scheduled			0		206	
	Total	0	0	0	0,0%	206	0,0%
HELI AIR MONACO	Scheduled	2 721	2 501	5 222		9 461	
	Non Scheduled	94	78	172		224	
	Total	2 815	2 579	5 394	-15,1%	9 685	-18,2%
HELI SECURITE	Scheduled	31	48	79		166	
	Non Scheduled	15	43	58		60	
	Total	46	91	137	-13,3%	226	-0,9%
IBERIA	Scheduled	5 090	4 878	9 968		18 613	
	Non Scheduled	25	23	48		48	
	Total	5 115	4 901	10 016	16,1%	18 661	5,6%
K.L.M. ROYAL DUTCH AIRLINES	Scheduled	4 846	4 119	8 965		16 918	
	Non Scheduled			0		0	
	Total	4 846	4 119	8 965	5,1%	16 918	1,3%
LOT-POLSKIE LINIE LOTNICZE	Scheduled	713	714	1 427		2 924	
	Non Scheduled			0		0	
	Total	713	714	1 427	-4,4%	2 924	-10,6%
LUFTHANSA	Scheduled	15 804	15 166	30 970		59 310	
	Non Scheduled	16	0	16		16	
	Total	15 820	15 166	30 986	23,8%	59 326	16,2%
LUXAIR	Scheduled	993	983	1 976		3 897	
	Total	993	983	1 976	24,8%	3 897	26,3%
NORWEGIAN AIR SHUTTLE	Scheduled	1 009	923	1 932		4 056	
	Total	1 009	923	1 932	0,0%	4 056	0,0%
ROYAL AIR MAROC	Scheduled	1 332	1 462	2 794		6 526	
	Total	1 332	1 462	2 794	14,4%	6 526	9,1%
RYANAIR	Scheduled	3 686	3 666	7 352		14 054	
	Total	3 686	3 666	7 352	0,0%	14 054	0,0%
SCANDINAVIAN AIRLINES	Scheduled	6 351	5 510	11 861		17 662	
	Non Scheduled	0	0	0		0	
	Total	6 351	5 510	11 861	39,1%	17 662	11,6%
SKY EUROPE AIRLINES	Scheduled	1 583	1 438	3 021		5 343	
	Non Scheduled			0		0	
	Total	1 583	1 438	3 021	100,0%	5 343	100,0%
STERLING AIRLINES A/S	Scheduled	4 508	4 336	8 844		17 788	
	Non Scheduled			0		0	
	Total	4 508	4 336	8 844	3,7%	17 788	1,8%
SWISS INTL AIR LINES S.A.	Scheduled	9 078	8 886	17 964		34 758	
	Non Scheduled			0		0	
	Total	9 078	8 886	17 964	18,2%	34 758	11,4%
TAP PORTUGAL	Scheduled	1 712	1 519	3 231		6 639	
	Non Scheduled			0		0	
	Total	1 712	1 519	3 231	0,0%	6 639	0,0%
TRANSVIA AIRLINES	Scheduled	4 852	4 424	9 276		18 508	
	Non Scheduled			0		0	
	Total	4 852	4 424	9 276	5,3%	18 508	-2,6%
TUNISAIR	Scheduled	4 318	3 876	8 194		17 915	
	Non Scheduled			0		0	
	Total	4 318	3 876	8 194	22,8%	17 915	11,6%
TURKISH AIRLINES	Scheduled	718	818	1 536		3 526	
	Total	718	818	1 536	61,7%	3 526	30,4%
VUELING AIRLINES S.A.	Scheduled	1 294	1 224	2 518		5 671	
	Total	1 294	1 224	2 518	0,0%	5 671	0,0%
WELCOME AIR	Non Scheduled	59	91	150		328	
	Total	59	91	150	0,0%	328	100,0%
Total		319 289	301 719	621 008	11,8%	1 212 270	6,3%

NON SCHEDULED COMPANIES	ARR	DEP	TOTAL	CUMUL
ABELAG				7
ABS JETS, A.S.	11	14	25	41
ACM AIR CHARTER LUFTFAHRT GMBH	2	0	2	2
AD AVIATION LIMITED	1	0	1	1
ADRIA AIRWAYS				199
AEGEAN AIRLINES				108
AERO SERVICE EXECUTIVE	0	0		6
AERODYNAMYCS MALAGA				4
AIGLE AZUR				156
AIR ALSIE	1	0	1	1
AIR CHARTER SCOTLAND LIMITED	2	2	4	5
AIR CHINA				80
AIR DOLOMITI				71
AIR EXECUTIVE / VISTAJET	1	3	4	4
AIR FOUR	12	15	27	41
AIR MEDITERRANEE	375	433	808	2 398
AIR ONE	383	382	765	765
AIR ONE EXECUTIVE	2	5	7	7
AIR PARTNER	19	15	34	49
AIRFIX AVIATION	16	20	36	42
AIRGO FLUGSERVICE	10	15	25	39
AIRJETSUL	4	4	8	8
AIRLINAIR	42	40	82	82
ALBA SERVIZI AEROTRASPORTI	37	24	61	107
ALIPARMA, SRL	4	0	4	4
ALIVEN	3	4	7	7
AMIRA AIR GMBH				4
ANTONOV AIRLINES	26	0	26	26
ATLANTIQUE AIR ASSISTANCE	23	24	47	47
AVIATION DEFENSE SERVICE	5	8	13	22
AVIES AIR COMPANY	8	9	17	17
AZUR HELICOPTERE	35	36	71	248
BANNERT AIR	0	2	2	2
BLUE LINE	42	0	42	486
BOOKAJET	1	0	1	1
CAT AVIATION. AG	0	5	5	5
CIRRUS LUFTFAHRT	13	9	22	30
CITY AIRLINE	43	41	84	84
CLUB 328 LTD	2	1	3	19
COMFORT AIR MUENCHEN	2	2	4	4
COMPAGNIA GENERALE RIPRESEARE				5
COMTEL-AIR	3	0	3	3
CORSAIR				567
CSA CZECH AIRLINES	264	297	561	561
CUKUROVA HAVACILIK A S	1	2	3	3
DAEDALOS FLUGBETRIEBS GMBH	0	0		2
DAIMLERCHRYSLER AVIATION GMBH	3	3	6	29
DARTA	4	0	4	9
DARWIN AIRLINES				64
DASNAIR	0	8	8	8
DASSAULT FALCON SERVICE	12	9	21	24
DJT AVIATION GMBH	0	0		8
EASTERN AIRWAYS (UK) LTD				66
EFD EISELE FLUGDIENST	7	7	14	14
EFS EURO FLIGHT SERVICE	2	1	3	3
EFS EUROPEAN FLIGHT SERVICE AB				4
EUROFLUG FRENZEL E.K.				2
EUROFLY S.P.A.				73
EUROJET AVIATION	3	3	6	15
EUROPE AIRPOST	70	47	117	3 388
EUROPEAN BUSINESS JETS	4	4	8	12
EXECUJET SCANDINAVIA	3	3	6	19
EXECUTIVE AIRLINES	5	5	10	10

NON SCHEDULED COMPANIES	ARR	DEP	TOTAL	CUMUL
FARNAIR SWITZERLAND				11
FB FLUGBEREITSCHAFT	0	1	1	5
FLY TYROL (ABC BEDARFSFLUG)				11
FLYGUPPDRAGET BACKAMO AB	3	0	3	3
FLYING SERVICE	4	6	10	31
FOXAIR SPA	7	3	10	15
FUTURA INTERNATIONAL AIRWAYS	91	2	93	93
G5 EXECUTIVE AG				8
GAMA AVIATION				36
GESTAIR EXECUTIVE				6
GIO BUSINESS AVIATION	0	5	5	5
GLOBAL JET AUSTRIA	7	6	13	45
GLOBAL JET/SILVER ARROWS	14	15	29	60
GOLDECK FLUG	3	3	6	6
HAMBURGER AIR CHARTER	2	0	2	2
HANGAR 8 LIMITED	1	0	1	1
HTM JET SERVICE	6	6	12	12
INTERNATIONAL JET MANAGEMENT	6	4	10	30
ION TIRIAC	2	0	2	2
JET ALLIANCE AG	15	9	24	36
JET AVIATION	10	5	15	23
JET CONNECTION	18	15	33	48
JET NETHERLANDS B.V				12
JET SERVICE	2	2	4	4
JETCLUB AG	1	4	5	9
JETFLITE				50
K2 SMARTJETS	7	8	15	15
KARLOG AIR				4
KARTHAGO AIRLINES				192
LINXAIR	3	2	5	9
LITHUANIAN AIRLINES	112	110	222	222
LONDON EXECUTIVE AVIATION LTD	0	4	4	49
MAJESTIC EXECUTIVE AVIATION	0	2	2	2
MAP EXECUTIVE FLIGHT SERVICE	2	12	14	20
MENEKSE SIVIL HAVACILIK	2	6	8	12
NETJETS	228	185	413	772
NETJETS AVIATION, INC.				5
NEXT JET	1	1	2	2
NORTH FLYING, A/S	4	3	7	7
NORTHERN EXECUTIVE AVIATION				6
NOUVELAIR TUNISIA	526	526	1 052	1 742
NV AIR SERVICE LIEGE	6	4	10	46
OCEAN SKY (UK)	10	2	12	18
PAN EUROPEENNE AIR SERVICE				143
POOLAVIATION	2	0	2	2
PRIVILEGE STYLE S.A.				1 115
PRO AIR AVIATION GMBH	2	0	2	2
PROPAIR, INC	6	0	6	6
QATAR AMIRI FLIGHT	10	14	24	24
RATH AVIATION GMBH	12	8	20	36
RAYA JET	3	3	6	6
ROYAL JET	1	0	1	1
SALZBURG JET AVIATION				2
SCOTAIRWAYS	29	29	58	58
SERVAIR PRIVATE CHARTER AG				3
SILESIA AIR S.R.O.	0	3	3	11
SIRIO	0	3	3	3
SKY WORK				9
SKYDRIFT LIMITED	4	0	4	20
SKYTAXI				107
SLAM LAVORI AEREI	4	5	9	9
SOLID AIR B.V.	3	1	4	10
SONNIG SA	13	12	25	55
SPEEDWINGS	12	16	28	35

NON SCHEDULED COMPANIES	ARR	DEP	TOTAL	CUMUL
STAR SERVICE INTERNATIONAL	1	1	2	2
STUTTGARTER FLUGDIENST	6	15	21	21
SUN AIR OF SCANDINAVIA	130	120	250	250
SWISS AIR AMBULANCE	5	2	7	12
SWISS EAGLE AG	1	0	1	1
TAG AVIATION S.A.	15	2	17	84
TAG AVIATION UK LTD	0	4	4	4
THOMAS COOK AIRLINES BELGIUM				129
TIME AIR	0	4	4	4
TRANS HELICOPTERE SERVICE	4	2	6	29
TRANSAVIA FLUGBETRIEBS GMBH	2	2	4	11
TRIPLE ALPHA	1	1	2	7
TWINJET AIRCRAFT SALES				8
TYROLEAN JET SERVICE	15	22	37	43
UNIJET	14	2	16	23
VISTA JET LUFTFAHRTUNTERNEHMEN	2	7	9	9
VLM AIRLINES	50	55	105	190
WINDROSE AIR JET CHARTER	1	0	1	1
WWW BEDARFSLUFTFAHRTGESELLSCHAFT	0	1	1	1
XL AIRWAYS, LTD	38	41	79	79
	2 985	2 828	5 813	16 370

FREIGHT REPORT

COMMERCIAL MOVEMENTS ONLY

Companies	ARR	DEP	TOTAL	Var 08/07	CUMUL	Var 08/07
AER LINGUS	0	0	0	-100,0%	336	-81,5%
AEROFLOT	139	280	419	-75,9%	4 028	-20,6%
AIR ALGERIE	0	1 291	1 291	100,0%	3 256	100,0%
AIR BERLIN	72	0	72	0,0%	514	0,0%
AIR FRANCE	37 071	24 251	61 322	-23,9%	122 089	-26,6%
AIR MEDITERRANEE	0	1 008	1 008	-35,3%	3 900	81,9%
ALITALIA	173	232	405	-54,2%	553	-78,7%
AUSTRIAN AIRLINES	311	544	855	-34,4%	1 587	-17,5%
BLUE 1, OY	25	0	25	0,0%	25	0,0%
BRITISH AIRWAYS	4 993	665	5 658	74,0%	6 715	-5,6%
BRUSSELS AIRLINES	323	0	323	-59,4%	1 375	27,3%
CORSE MEDITERRANEE	2 088	0	2 088	100,0%	4 494	100,0%
DELTA AIR LINES	15 912	26 812	42 724	-21,4%	80 768	-2,0%
EMIRATES	18 486	93 673	112 159	-5,1%	196 782	-14,7%
EUROPE AIRPOST	63 975	21 467	85 442	29,7%	178 170	22,1%
EXIN	42 492	56 546	99 038	12,3%	203 753	10,5%
IBERIA	0	25	25	-83,7%	25	-91,9%
K.L.M. ROYAL DUTCH AIRLINES	559	997	1 556	-47,8%	2 705	-58,1%
LOT-POLSKIE LINIE LOTNICZE	0	15	15	-94,0%	35	-93,7%
LUFTHANSA	11 245	19 838	31 083	-36,3%	53 519	-38,4%
LUXAIR	1	0	1	0,0%	1	0,0%
MINILINER	0	0	0	-100,0%	0	-100,0%
NORWEGIAN AIR SHUTTLE	0	0	0	0,0%	96	0,0%
PORTUGALIA	0	0	0	-100,0%	0	-100,0%
ROYAL AIR MAROC	0	2 034	2 034	100,0%	3 585	100,0%
SAUDI ARABIAN AIRLINES	0	0	0	0,0%	0	-100,0%
SCANDINAVIAN AIRLINES	835	2 561	3 396	-11,6%	5 755	-11,9%
SWIFT AIR	29 874	18 540	48 414	8,7%	94 987	2,1%
SWISS INTL AIR LINES S.A.	11 176	30 995	42 171	4,8%	79 333	3,4%
TAP PORTUGAL	98	112	210	0,0%	593	0,0%
TUNISAIR	4 688	8 495	13 183	64,8%	25 237	76,6%
TURKISH AIRLINES	6 753	2 066	8 819	100,0%	16 337	100,0%
WDL AVIATION GMBH	0	0	0	-100,0%	0	-100,0%
WEST AIR EUROPE	1 701	860	2 561	0,0%	2 561	0,0%
XL AIRWAYS, LTD	0	0	0	-100,0%	0	-100,0%
TOTAL	252 990	313 307	566 297	-13,1%	1 093 114	-16,1%